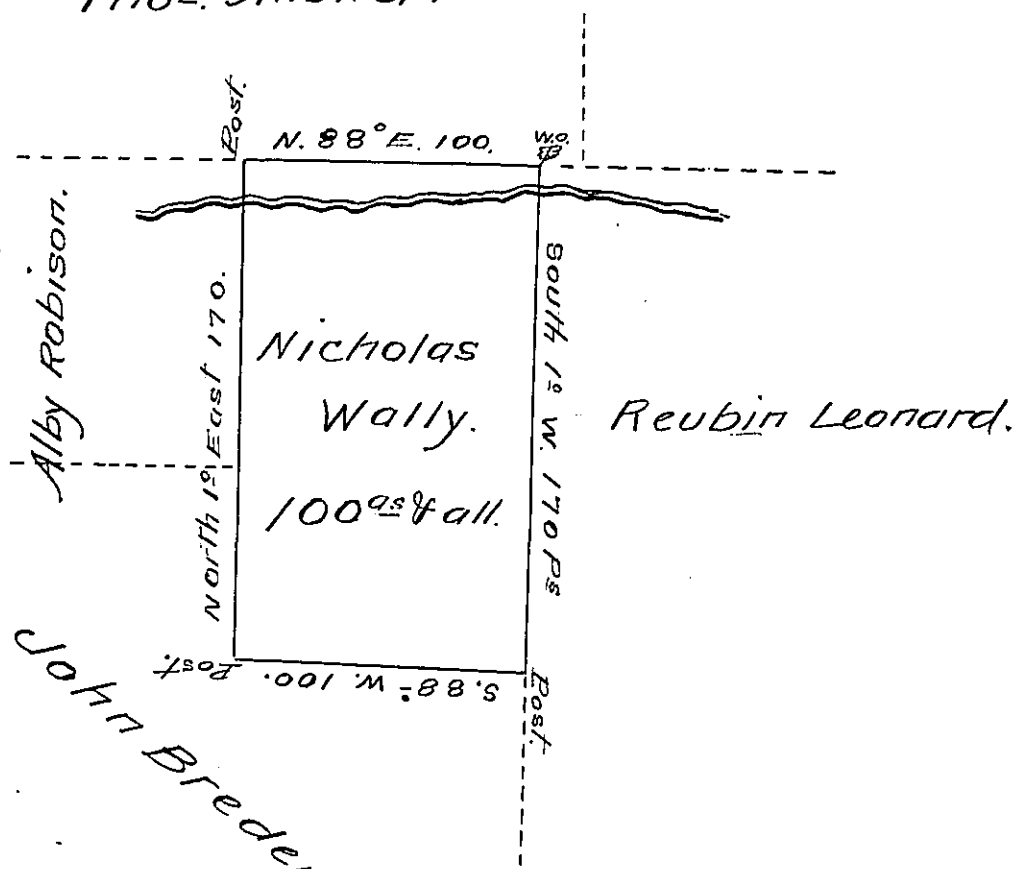


C-3-271

Thos. Allsworth.

C-186

2d



C-175-290

Draft of part of a tract of land situated in Parker town-
ship Butler County, on the waters of Bear creek, containing
one hundred acres and allowance of six per cent &c.

Survey made the 26th day of Sept^r 1839 at the in-
stance of Nicholas Wally by virtue of settlement and
improvement. Signed Jas. Dunlap.

Depty Surveyor B. County

I do hereby certify the above draft to be a true copy of
a survey entered in the survey book of James Dunlap
Esq^r formerly a deputy Surveyor of this County of which
I now approve. (~~Butler at my office~~) October 3rd A.D. 1855.

W^m Purviance

To J. Porter Brawley Esq^r
Surveyor Gen^l. of Penna.

County Surveyor
of Butler Co.

M.

IN TESTIMONY that the above is a copy of the original remaining on file in
the Department of Internal Affairs of Pennsylvania, made
conformably to an Act of Assembly approved the 16th day of
February, 1833, I have hereunto set my Hand and caused
the Seal of said Department to be affixed at Harrisburg,
this twelfth day of September 1907.

Henry Howard

Secretary of Internal Affairs.